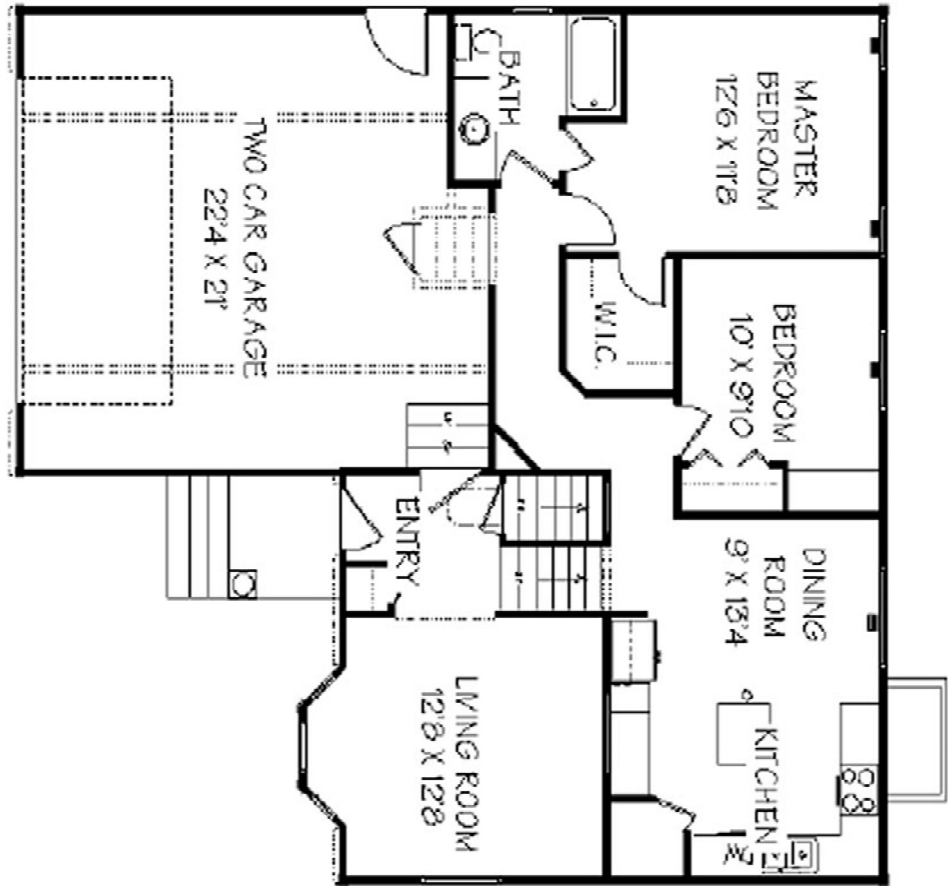


Connect public water to the line going into the house. Inspector must see a clear break from the old line coming from the well. Old well can be used for irrigation or other means just not tied to the line coming from CWSD in any way. Cross Connection prevention is extremely important to CWSD and is mandated by state law.



## Breaking from well and transferring service to public water requirements.

Customer line from the meter can to the connection point, must be 24" deep. No physical connection between city water and a well, (unknown source) is allowed. A valve is required on the customer's side next to the meter can, within 5 feet, in a separate can owned and maintained by the property owner. Customer's pressure regulator can be in their can after their valve or located inside the house after the valve in the house if the meter can is a substantial distance from the house.

Inspector MUST SEE where the old line from the well is disconnected from the house. DO NOT COVER or the results will be a failed inspection and re-inspection fees may be required.